



Roebuck Close, Reigate

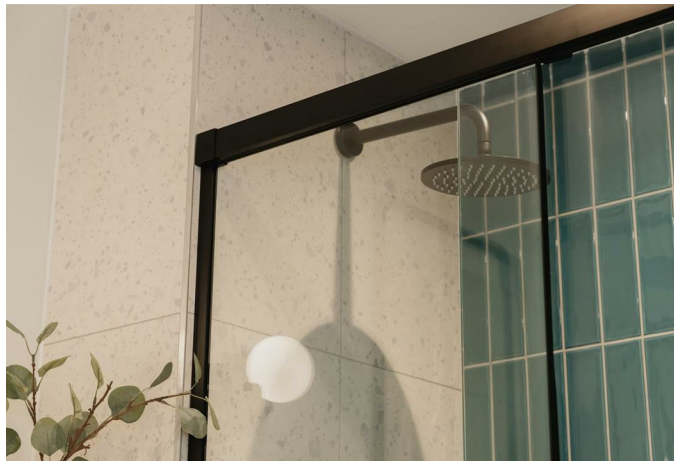
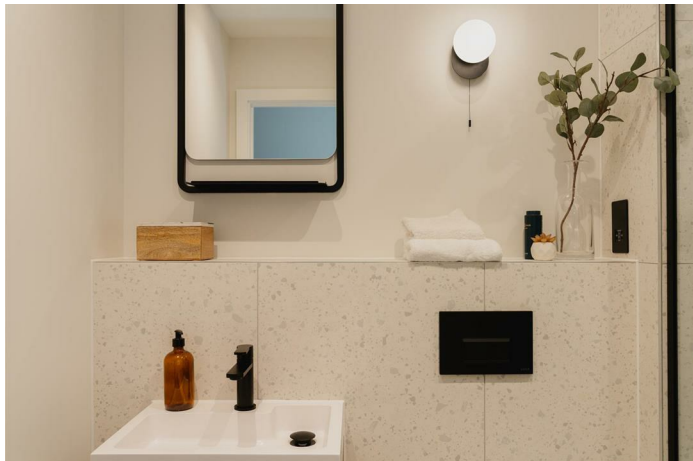
£265,000





Stunning, one bedroom ground floor apartment in central Reigate with high quality finishes throughout





A design led development with first class detailing throughout. Stylish, high quality fittings and a 10 year warranty give peace of mind, enabling you to move straight in and enjoy a slice of luxury living.

Built by boutique developer, Life Less Ordinary, this brand new development is tucked away in a cul de sac in the centre of Reigate. With the town and all its amenities right on the doorstep, it offers the utmost convenience. Whether looking to browse the selection of local and high street shops, grab a bite to eat, a coffee, or simply go for a walk in the park, just a few steps down the road and you're there.

The communal areas are modern and stylish, giving a feeling of stepping into a hotel lobby. There is a lift to all floors and all apartments come with undercroft secure parking.

The high end finishes throughout the apartments really set this development apart, including German Hacker kitchens with built in Bosch appliances, terrazzo porcelain tiling to the bathrooms, Crosswater thermostatic showers and fitted wardrobes to main bedrooms.

All apartments offer a distinctive open plan living space which is ideal for modern living. The two bedroom apartments have en suite shower rooms as well as bathrooms and some plots have separate internal office spaces which is perfect for those needing a dedicated work from home space.



Need to know

- Spacious, one bedroom, ground floor apartment
- Built in Bosch appliances and separate utility cupboard for washer/ dryer
- Quiet cul de sac location in the centre of town
- Stylish contemporary finishes throughout
- Crosswater taps and fittings with matt black shower enclosure to en suite and bathroom
- Fitted German Hacker kitchen with matt teal doors and grained oak wall units
- Amtico oak flooring and soft grey carpets to bedrooms
- Good size double bedroom with built in wardrobes
- Secure undercroft parking included
- Leasehold 250 years, £0 Ground Rent



Ground Floor

The Vale, Roebuck Close, Reigate

Total Area: 48.3 m² ... 520 ft²

FOR ILLUSTRATIVE PURPOSES ONLY.

Whilst every attempt has been made to ensure the accuracy of the floor plan shown, all measurements, positioning, fixtures, features, fittings and any other data shown are an approximate interpretation for illustrative purposes only and are not to scale.

No responsibility is taken for any error, omission, miss-statement or use of data shown.

The above statement applies to both 'Still Moving London LTD' and the Company or individual displaying this floor plan.

Unauthorised reproduction prohibited.

© Still Moving London LTD (www.stillmoving.london)



Interested?

reigate@ralphjames.co.uk

01737 333677

1

ralphjames.co.uk